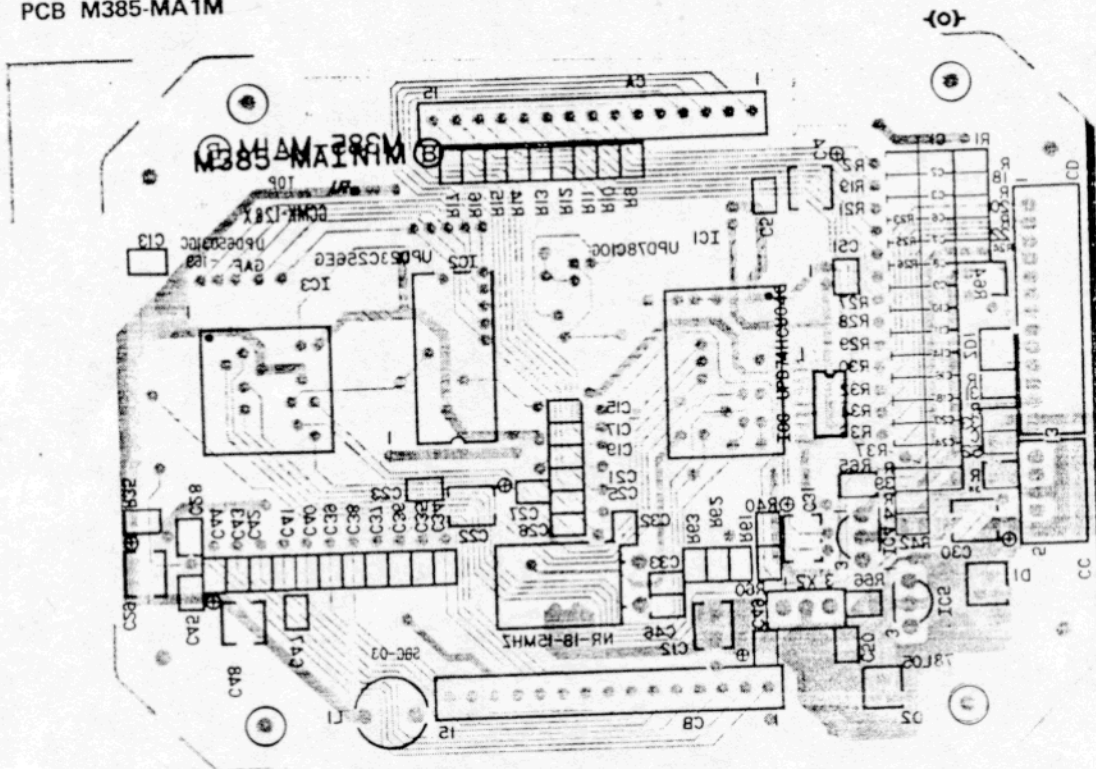
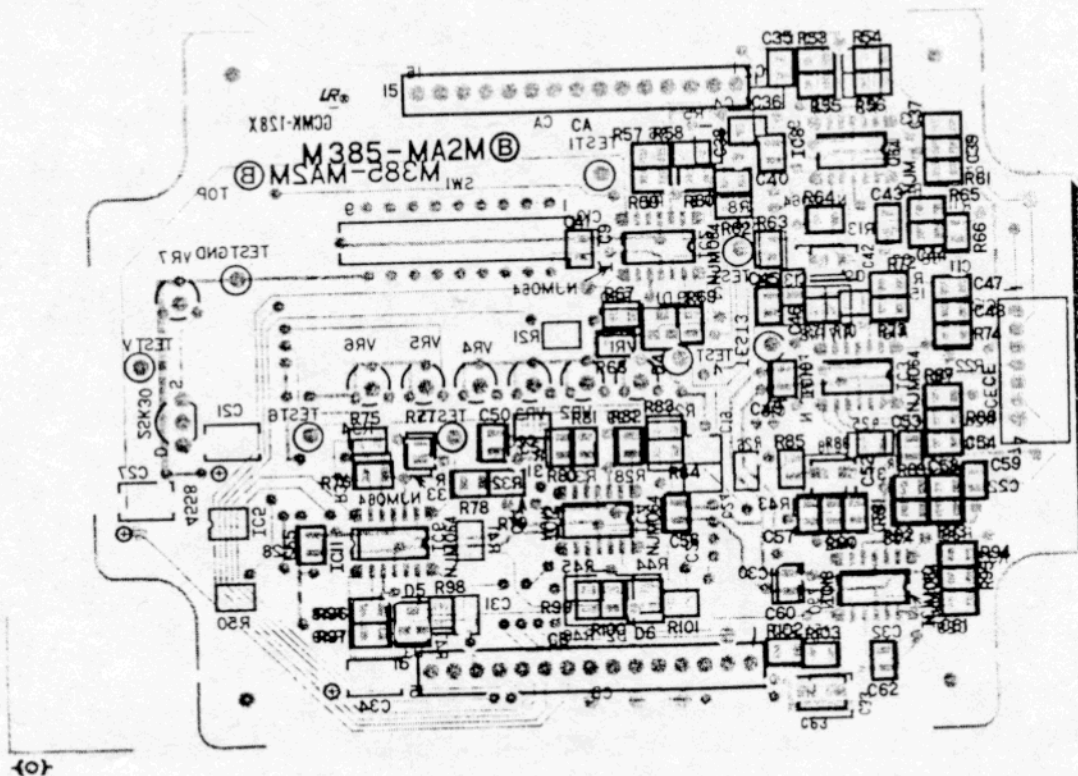


2 PCB VIEW

2-1 PCB M385-MA1M



2-2 PCB M385-MA2M



2-3 PART NUMBER REFERENCE TABLE

2-4 PCB M385-MA1M

Resistors

R1	47 K Ω	R25~R30	1 K Ω	R41, R42	1 K Ω
R2	1 K Ω	R31	1 K Ω	R43~R46	Not used
R3~R8	Not used	R32	1 K Ω	R47~R59	Not used
R9~R18	47 K Ω	R33	220 Ω	R60	47 Ω
R19	1 K Ω	R34	1 K Ω	R61	10 K Ω
R20	47 K Ω	R35	10 K Ω	R62	1 K Ω
R21	1 K Ω	R36, R37	1 K Ω	R63	10 K Ω
R22	47 K Ω	R38	220 Ω	R64	2.2 K Ω
R23	1 K Ω	R39	1 K Ω	R65	10 K Ω
R24	47 K Ω	R40	10 K Ω	R66	1 M Ω

LSIs and ICs

IC1	μ PD78c10G-1B-X	IC3	μ PD65031GC169 (GA.F)	IC5	NJM78L05R
IC2	μ PD23C256EG-	IC4	PST518A-2	IC6	μ PD74HCU04G

Capacitors

C1~C3	220 pF	C19	330 pF	C31	25V4.7 μ
C4	16V10 μ	C20	220 pF	C32	330 pF
C5	0.01 μ F	C21	330 pF	C33	15 pF (Non polarity)
C6~C11	220 pF	C22	16V10 μ	C34~C45	220 pF
C12	16V10 μ	C23	0.01 μ F	C46	15pF (Non polarity)
C13, C14	220 pF	C24	220 pF	C47	0.01 μ F
C15	330 pF	C25~C27	330 pF	C48	10V33 μ
C16	220 pF	C28	0.01 μ F	C49, C50	56 pF (Non polarity)
C17	330 pF	C29	16V10 μ	C51	0.01 μ F
C18	220 pF	C30	16V22 μ	C52	100 pF

Oscillators

X1	NR-18-15MHz	X2	NR-18-2MHz
----	-------------	----	------------

Coil

L1	SBC-03
----	--------

Zener Diodes

ZD1	HZM5C	D1, D2	ISS220-L
-----	-------	--------	----------

2-6 PCB M385-MA2M

Resistors

R1~R3	47 K Ω	R36	4.7 K Ω	R71	22 K Ω
R4	22 K Ω	R37~R38	47 K Ω	R72~R73	47 K Ω
R5	2.2 K Ω	R39~R40	100 K Ω	R74	4.7 K Ω
R6	1 K Ω	R41	2.2 M Ω	R75	1 K Ω
R7	4.7 K Ω	R42	22 K Ω	R76	100 K Ω
R8	2.2 M Ω	R43	47 K Ω	R77	2.2 K Ω
R9	2.7 M Ω	R44	10 K Ω	R78	2.7 M Ω
R10~R12	100 K Ω	R45~R46	100 K Ω	R79	2.2 M Ω
R13	330 K Ω	R47	10 K Ω	R80	1 K Ω
R14	2.2 K Ω	R48~R49	100 K Ω	R81	100 K Ω
R15~R17	47 K Ω	R50	56 Ω	R82	2.2 K Ω
R18	22 K Ω	R51	330 K Ω	R83	2.7 M Ω
R19	10 K Ω	R52	2.2 K Ω	R84	2.2 M Ω
R20~R21	100 K Ω	R53~R54	47 K Ω	R85	2.2 K Ω
R22	4.7 K Ω	R55	22 K Ω	R86	330 K Ω
R23~R24	100 K Ω	R56	47 K Ω	R87~R88	100 K Ω
R25	330 K Ω	R57	1 K Ω	R89	47 K Ω
R26	2.2 K Ω	R58	2.2 K Ω	R90	22 K Ω
R27	2.2 M Ω	R59	100 K Ω	R91~R92	47 K Ω
R28	2.7 M Ω	R60	2.7 M Ω	R93	4.7 K Ω
R29	2.2 K Ω	R61	4.7 K Ω	R94~R97	100 K Ω
R30	100 K Ω	R62	2.2 M Ω	R98	10 K Ω
R31	1 K Ω	R63	2.2 K Ω	R99~R100	100 K Ω
R32	2.7 M Ω	R64	330 K Ω	R101	10 K Ω
R33	2.2 K Ω	R65~R68	100 K Ω	R102	2.2 K Ω
R34	1 K Ω	R69	10 K Ω	R103	330 K Ω
R35	100 K Ω	R70	47 K Ω		

Capacitors

C1	0.012 μ F	C22	0.033 μ F	C43	4700 pF
C2	0.047 μ F	C23	1000 pF	C44	8200 pF
C3	8200 pF	C24	0.022 μ F	C45	0.047 μ F
C4	0.01 μ F	C25	0.01 μ F	C46	0.027 μ F
C5	1000 pF	C26	0.033 μ F	C47	0.022 μ F
C6	0.01 μ F	C27	50V1 μ	C48	1000 pF
C7	3300 pF	C28	0.01 μ F	C49	0.01 μ F
C8	6800 pF	C29	0.018 μ F	C50	0.033 μ F
C9	50V1 μ BP	C30	0.01 μ F	C51	0.047 μ F
C10	0.01 μ F	C31	0.027 μ F	C52	50V1 μ BP
C11	0.018 μ F	C32	0.01 μ F	C53	6800 pF
C12	1000 pF	C33	50V1 μ BP	C54	0.015 μ F
C13	0.018 μ F	C34	10V33 μ	C55	0.01 μ F
C14	0.047 μ F	C35	0.015 μ F	C56	0.01 μ F
C15	0.01 μ F	C36	0.047 μ F	C57	0.047 μ F
C16	0.01 μ F	C37	0.012 μ F	C58	1000 pF
C17	5600 pF	C38	0.015 μ F	C59	0.047 μ F
C18	50V1 μ BP	C39	1000 pF	C60	0.01 μ F
C19	0.018 μ F	C40	0.01 μ F	C61	0.027 μ F
C20	0.047 μ F	C41	0.01 μ F	C62	0.012 μ F
C21	50V1 μ	C42	50V1 μ BP	C63	50V1 μ BP

Diodes

D1~D6	ISS220
-------	--------

Others

IC1~4, 6~13	NJM064M
IC5	BA4558F-DX
FET	2SK30ATMY
SW	A6D-9103